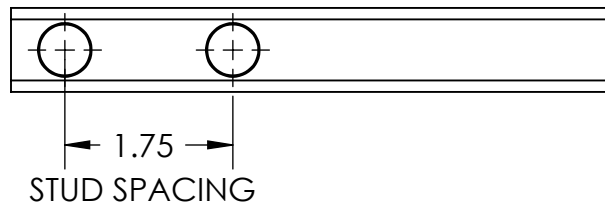
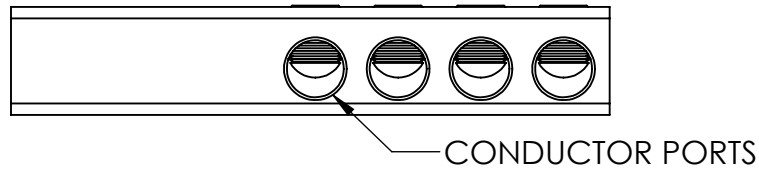
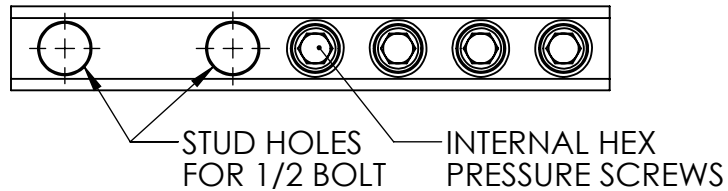
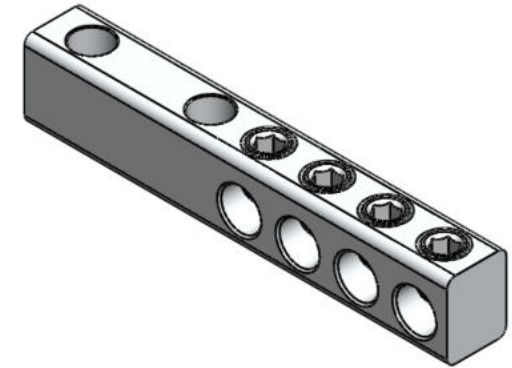


PART	# OF CONDUCTORS	WIRE RANGE	HEX SIZE	L	H	W
STL250-4	4	250KCMIL - 6 AWG	5/16	6.24	1.125	.875
STL250-6	6	250KCMIL - 6 AWG	5/16	7.96	1.125	.875
STL250-8	8	250KCMIL - 6 AWG	5/16	9.68	1.125	.875
STL350-4	4	350KCMIL - 6 AWG	5/16	6.96	1.44	1.00
STL350-6	6	350KCMIL - 6 AWG	5/16	9.06	1.44	1.00
STL350-8	8	350KCMIL - 6 AWG	5/16	11.16	1.44	1.00
STL500-4	4	500KCMIL - 4 AWG	5/16	7.50	1.63	1.13
STL500-6	6	500KCMIL - 4 AWG	5/16	9.74	1.63	1.13
STL500-8	8	500KCMIL - 4 AWG	5/16	12.03	1.63	1.13
STL750-4	4	750 - 250KCMIL	3/8	8.57	2.00	1.44
STL750-6	6	750 - 250KCMIL	3/8	11.42	2.00	1.44
STL750-8	8	750 - 250KCMIL	3/8	14.28	2.00	1.44



NOTE:

1. TIN PLATED 6061-T6511 ALUMINUM ALLOY.
2. TWO MOUNTING HOLES ENSURE SECURE CONNECTION.
3. RATED 600 VOLTS.

CONTACT NSI FOR SALES @ 800.321.5847

NSI **NSI INDUSTRIES, LLC**
TORK USA • 800.321.5847 • www.nsiindustries.com

PROPRIETARY AND CONFIDENTIAL		9730 Northcross Center Court Huntersville, NC 28078	
THE INFORMATION CONTAINED IN THIS DRAWING IS THE SOLE PROPERTY OF POLARIS SALES CO. INC. ANY REPRODUCTION IN PART OR AS A WHOLE WITHOUT THE WRITTEN PERMISSION OF POLARIS SALES CO. INC. IS PROHIBITED.		TITLE: TRANSFORMER LUGS STL SERIES	
NAME	DATE	DWG. NO.	
DRAWN BY S.PARRY	9/25/2012	STP_-	
MATERIAL: 6061-T6511 ALUMINUM		SCALE: 1:1	SHEET: 1 OF 1